

Hillsborough County  
**Residential Street  
Lighting Program**



**Hillsborough  
County Florida**  
Public Works

[HCFLGov.net/PublicWorks](http://HCFLGov.net/PublicWorks) | (813) 635-5400

**Neighborhood street lights** in unincorporated Hillsborough County are paid for by property owners as a separate Hillsborough County Consolidated Street Lighting Special Purpose District assessment on their property tax bill or as a fee within their homeowner’s association assessment. Adding new street lights to existing neighborhoods is possible, but requires agreement from the property owners who will be paying for them.

**Street Lighting Petition Process**

To establish a new lighting district or to upgrade an existing lighting district:

1. A resident or organization contacts Hillsborough County Public Works Traffic Services Section at (813) 635-5400.
2. Hillsborough County will request a lighting plan for the area from Tampa Electric Company (TECO).
3. Hillsborough County will send the petitioner a map showing the boundaries of the proposed lighting area, a letter explaining the type of lighting, an approximate cost, a copy of the proposed street lighting plan, and the petition forms.
4. The petitioner must circulate the petition among the citizens within the boundaries of the proposed area. The signatures obtained must constitute a majority (more than 50 percent to establish or 70 percent to upgrade) of the property owners. Completed petitions must be received by the County by Oct. 1 for consideration during the annual public hearing cycle.
5. When petitioning for registered voters, the petition is submitted to the Supervisor of Elections for the verification of the names. There is no fee for verifying property owners or for verifying registered owners. If Hillsborough County confirms that the petition contains the necessary majority of signatures and all requirements have been met, the petitioned area will be placed on the annual February schedule for a public hearing to establish new street lighting districts.
6. In compliance with County and State regulations, a notice of a public hearing is published in a daily newspaper to inform interested parties of a proposed street lighting district, and to allow all affected property owners the right to appear at the hearing, and to file written objections or comments concerning the proposed lighting areas. At the public hearing, the Board of County Commissioners (BOCC) will consider any objections or comments for approving or not approving a proposed lighting area.
7. If the area is approved, Hillsborough County authorizes TECO to install the lights. TECO has one year from October 1, after BOCC approval, to October 1 of the following year to complete installation of all the new areas.
8. The method of collection for funding of this special taxing district for street lighting is by special assessment. The assessment is added to property owners’ tax bills before the installation of lights. The funds are collected in advance for payment of the lighting bills.



**Cost of Street Lighting**

Hillsborough County presently services nearly 800 Lighting Districts, with over 34,000 lights. Annual revenue to provide these services is nearly \$12 million.

Street lighting is billed annually in advance. The uniform non-ad valorem assessment method, set forth in Chapter 197.3632, Florida Statutes, is used to collect for Street Lighting Services. The assessments are part of the annual (ad valorem) property tax bill.

Cost of the Residential Street Lighting Program managed by Hillsborough County Public Works Department, Traffic Engineering Section, includes: planning and engineering, installation, maintenance, tree trimming, and energy to operate the light. Lights are installed and maintained by TECO. Regular relamping (changing the light bulb) is part of a preventive maintenance plan. Necessary tree trimming is done upon request of the residents. All light fixtures are equipped with a dusk-to-dawn sensor controlling light operation.

Street light assessments are based on the front footage of your lot (parcel). Lots with up to 150 feet of front footage are charged a uniform lot charge (rate/lot). Bigger lots with more than 150 feet of front footage are charged by the actual footage, times the rate/ft.

**Rates, effective Oct. 1, 2023**

| LED Classifications  | Rate/Lot (Lot<150ft) | Rate/Ft |
|--|----------------------|---------|
| LED/Wooden Poles, Overhead Wiring (LEDWO)                    | \$49.51              | \$0.330 |
| LED/Ornamental or Concrete Pole, Overhead Wiring (LEDOCO)    | \$65.77              | \$0.438 |
| LED/Ornamental or Concrete Pole, Underground Wiring (LEDOCU) | \$84.54              | \$0.564 |
| LED/Mixed Service (LEDMS)                                    | \$82.60              | \$0.551 |
| LED/Premium Post Top Plain (LEDPPP)                          | \$152.05             | \$1.014 |
| LED/Premium Fiberglass Plain (LEDPPF)                        | \$248.17             | \$1.654 |
| LED/Premium Decorative Type 2 (LEDPD2)                       | \$302.31             | \$2.015 |
| LED/Premium Mixed Decorative Type 1 (LEDPM1)                 | \$225.28             | \$1.502 |
| LED/Premium Mixed Decorative Type 2 (LEDPM2)                 | \$170.85             | \$1.139 |
| LED/Premium Mixed Decorative Type 3 (LEDPM3)                 | \$397.62             | \$2.651 |

Prices are subject to change based on BOCC approval.

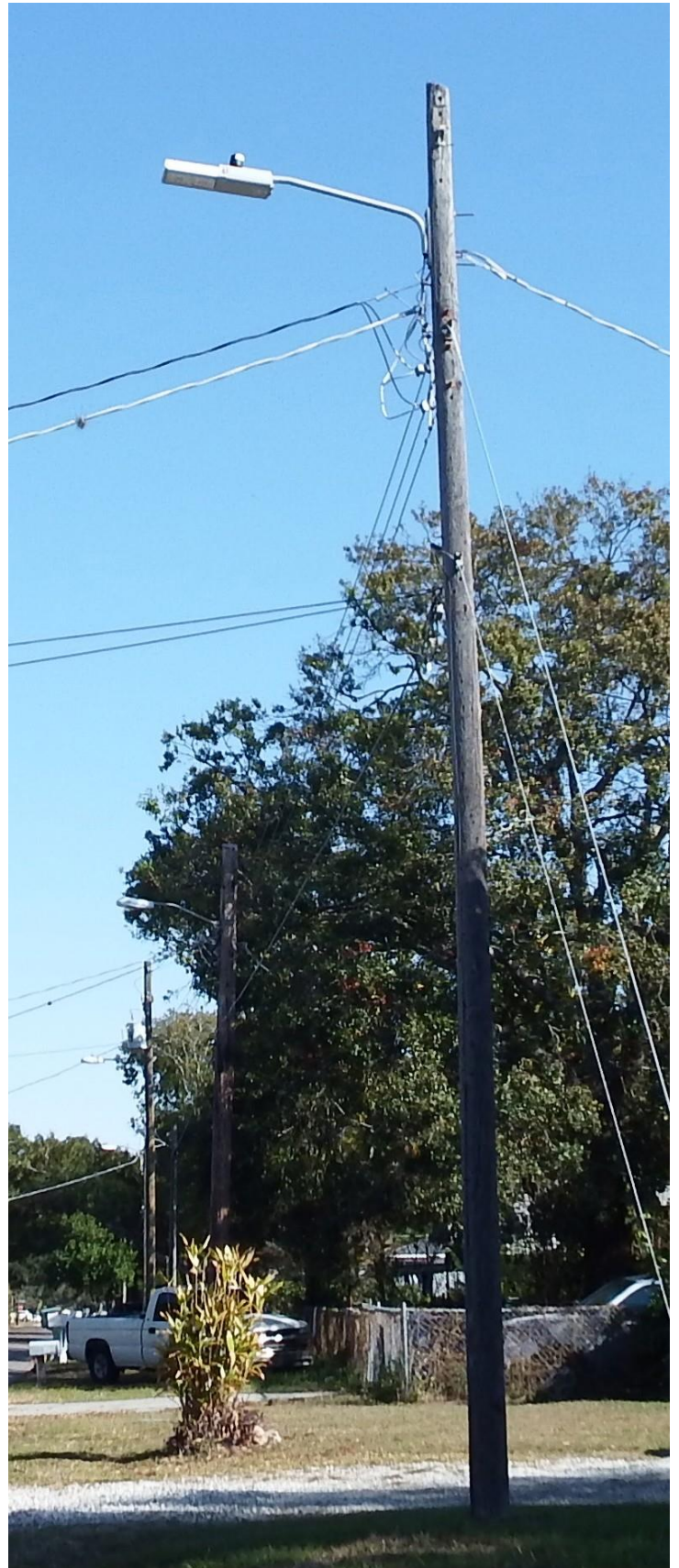
## LEDWO Wooden Poles

### Specifications:

- Light: LED
- Fixture: Cobra Head
- Pole: Wood, Overhead Wiring
- Color: Gray
- Height: 29 ft.
- Power: 106W
- Rate: \$49.51 per lot; \$0.330 per front foot, for lots over 150 ft. of front footage

### Features:

- Bright and energy efficient
- Semi-cut off/Cut off array
- Ideal for neighborhood streets and public facilities



## LEDOCU Ornamental or Concrete Pole

### Specifications:

- Light: LED
- Fixture: Cobra Head
- Pole: Concrete, Underground Wiring
- Color: Gray
- Height: 29 ft.
- Power: 106W
- Rate: \$84.54 per lot; \$0.564 per front foot, for lots over 150 ft. of front footage

### Features:

- Bright and energy efficient
- Semi-cut off/Cut off array
- Ideal for neighborhood streets and public facilities



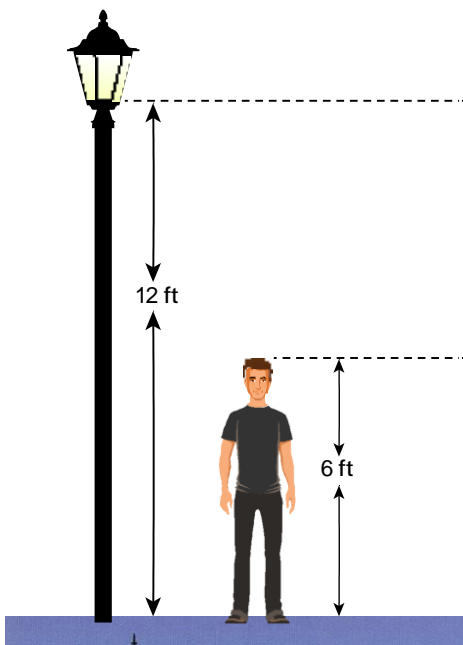
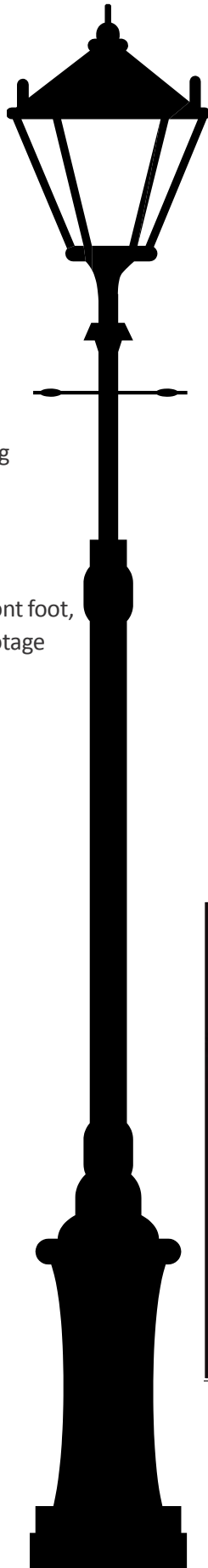
## LEDPD2 Premium Decorative Type 2

### Specifications:

- Light: LED
- Fixture: Salem
- Pole: Aluminum, Underground wiring
- Color: Black
- Height: 12 ft.
- Power: 99.1W
- Rate: \$302.31 per lot; \$2.015 per front foot, for lots over 150 ft. of front footage

### Features:

- Bright and traditional styling
- Glass refractor/Energy efficient
- Perfect for neighborhood streets and commercial communities with mature tree canopies



## LEDPM1 Premium Mixed Decorative Type 1

### Specifications:

- Light: LED
- Fixture: Salem
- Pole: Aluminum, Underground wiring
- Color: Black
- Height: 12 ft.
- Power: 66.7W
- Rate: \$225.28 per lot; \$1.502 per front foot, for lots over 150 ft. of front footage

### Features:

- Traditional styling
- Glass refractor/Energy efficient
- Perfect for neighborhood streets and commercial communities with mature tree canopies

